

KING AIRE



2012 | KING AIRE
ALL NEW. UNRIVALED.



NEW STYLING

King Aire's gorgeous new exterior design coordinates with its four new interior decors. Gleaming chrome graces its all new grill.

2012 KING AIRE

LUXURY MOTOR COACH

WHEN WAS THE LAST TIME YOU HAD YOUR BREATH TAKEN AWAY?

The all new 2012 King Aire, featuring unmatched Newmar craftsmanship and attention to detail. Step through its wide front door. Its rich browns, deep leather and gleaming hardwoods surround you. Notice the redesigned Ultra Leather® furniture. The glowing Art Deco hardwood design features. New extra luxurious touches, from kitchen to bath. And a punchy new chrome grill plus 600 horses of diesel power...so you know who's in charge.

The image shows the interior of a motorhome, likely a 2012 King Aire. The space is divided into a kitchen area on the left and a living area on the right. The kitchen features dark wood cabinetry, a stainless steel sink, a microwave, and a tiled backsplash. The living area is furnished with two large, plush, tan leather sofas facing each other, with a small round coffee table in between. The walls and ceiling are finished with dark wood paneling and Art Deco-style decorative elements. Large windows with white blinds are visible on both sides. The floor is covered in dark, square tiles. The overall atmosphere is one of luxury and comfort.

HARKEN BACK TO A MORE SUMPTUOUS TIME.

Its pencil thin stainless kitchen tiles send off a warm glow. Its substantial hardware feels weighty in your hand. Its hardwood cabinetry doors close with a satisfying note of solidity. And a hush fills the air.

The 2012 King Aire is like no other. Its treasures include 40" Sony® LCD TVs, a Surround Sound System with CD/DVD/Blu-Ray and an exterior entertainment system. And you, seated comfortably atop your world.

STELLAR DESIGN.

Look up – unless you're too busy staring at the new Ultra Leather® window treatments or the downright stunning wood designs springing from the walls. You can't miss the stellar designer drop ceiling with stainless steel, Ultra Leather®, polished hardwood and halogen down lights.

RICH BEAUTY.

Enjoy the opulent comfort of King Aire's newly designed Ultra Leather® furnishings. And enjoy the rich beauty of its new custom designed Art Deco hardwood wall and ceiling features.



ELEGANT KITCHEN



STYLISH SINK AND BACKSPASH

TOP

Serve your guests from solid polished Corian® countertops with a stunning new stainless steel tile backsplash. Then tuck your favorite delicacies away in gleaming hardwood cabinets.

FAR RIGHT

The theme is luxury, from the bolstered UltraLeather® dinette table area to the glimmering new cabinetry hardware at your beck and call.



STYLIZED OVEN

A BACKDROP FOR FIVE STAR ENTERTAINING.

The stage is set. The materials are sumptuous. Stainless steel tiles and appliances. Solid polished Corian® countertops. Custom hardwood cabinetry. So invite your most discerning friends. Then watch them take it all in.



PLUSH DINING



SLEEP NUMBER BED*

BEDROOM

Your king size Sleep Number Bed* awaits. So does the remote of your 40" Sony® flatscreen TV with Bose Wave® surround sound and Blu-ray. Your other option? Just gazing at the gorgeous hardwood and Ultra Leather® all around you.

*optional



BOSE WAVE® & SONY FLATSCREEN



HIS & HER SINKS

BATHROOM

The new King Aire rear bathroom holds you in the lap of luxury with its 40" x 32" residential shower with designer glass tile inserts. A more roomy Ultra Leather® faced wardrobe and double sinks with a polished Corian® counter give both of you the pamper time you need.



LARGEST SHOWER IN THE INDUSTRY

A GLEAMING NEW COACH.

With its Full-Paint Masterpiece™ Finish and Super Clear Coat, you know it's a Newmar. The 2012 King Aire comes with four new exterior design choices and a stellar new chrome grill and headlight design.



NEW FRONT GRILL



NEW HEADLIGHT ASSEMBLY



COMFORT DRIVE™ EQUIPPED



TWO-TONE CHAIRS



ENTRY WITH CHROME DETAIL

DRIVE WITH A LIGHT TOUCH. THE ROAD IS YOURS.

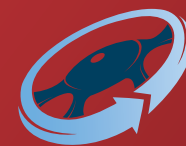
Comfort Drive™, another exclusive Newmar innovation, means less effort turning the wheel when you back up or turn. The steering wheel returns to center automatically, even after hard turns. And with Comfort Drive™, you steer with a light grip, making long trips less tiring.

TAKE COMMAND.

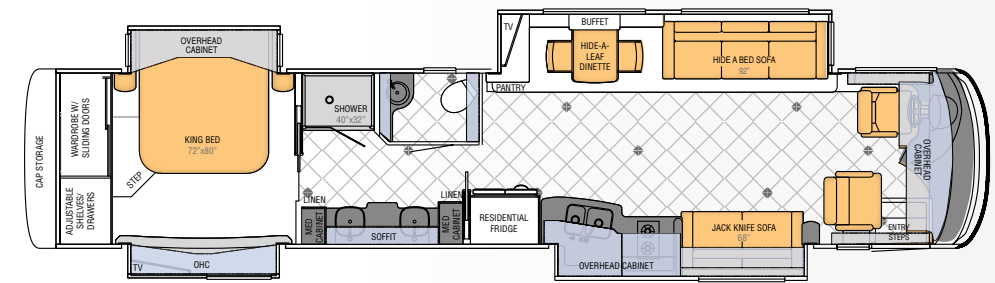
King Aire's Comfort Drive™ Steering makes it easy to take command of the road. And Xite® Radio with Nav-N-Go® System provides the ultimate in entertainment and directions.

STEP UP.

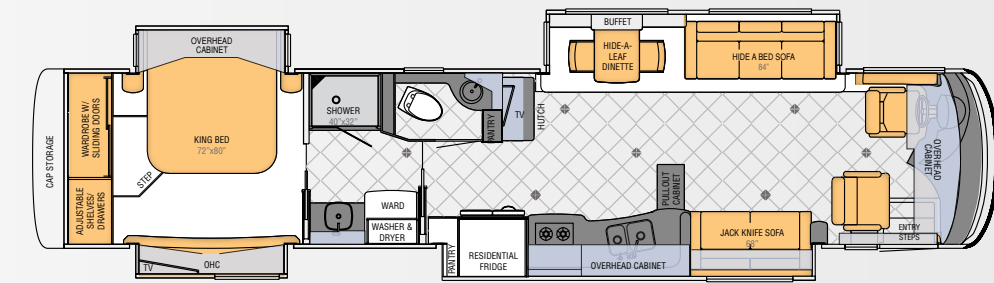
A wider entry door makes entering your gorgeous King Aire cabin an even more pleasurable experience.



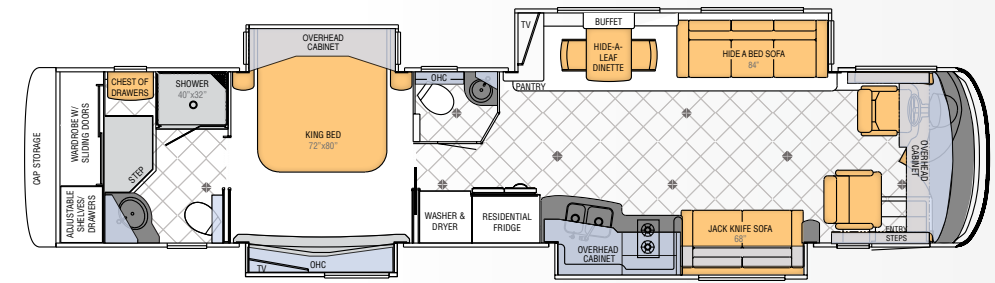
Comfort Drive
STEERING



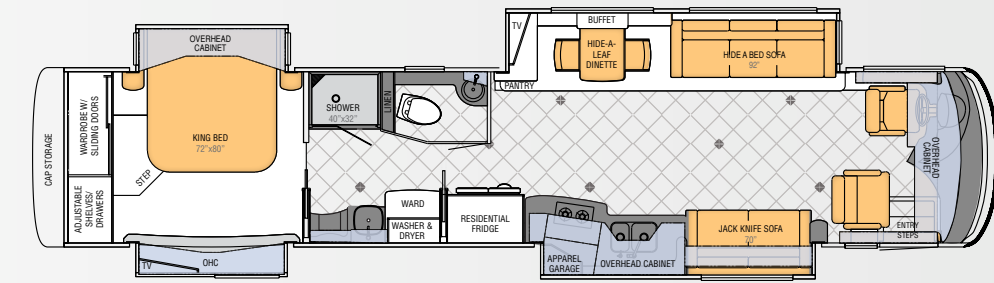
4585



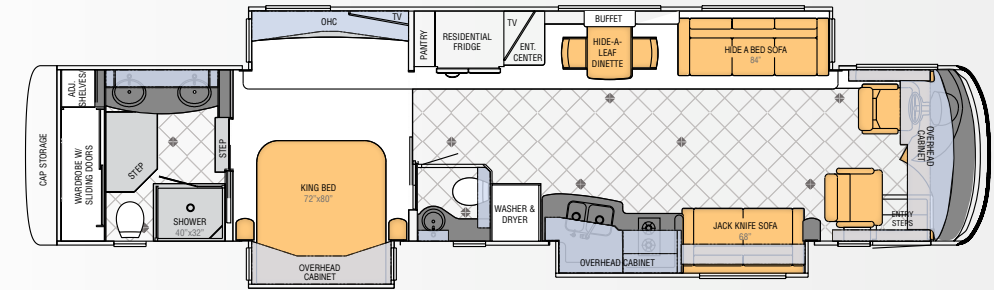
4582



4581



4580



4584

FLOOR PLAN SPECIFICATIONS

Floor Plan	App. Overall Length	Width	App. Overall Height	Interior Width	Interior Height	Grey	Sewage	Water	Propane	Furnace
4585	44' 11"	101.5"	13' 4"	95.5"	84"	80 gal.	60 gal.	140 gal.	32 gal.	50,000 btu
4582	44' 11"	101.5"	13' 4"	95.5"	84"	80 gal.	60 gal.	140 gal.	32 gal.	50,000 btu
4581	44' 11"	101.5"	13' 4"	95.5"	84"	80 gal.	60 gal.	140 gal.	32 gal.	50,000 btu
4580	44' 11"	101.5"	13' 4"	95.5"	84"	80 gal.	60 gal.	140 gal.	32 gal.	50,000 btu
4584	44' 11"	101.5"	13' 4"	95.5"	84"	80 gal.	60 gal.	140 gal.	32 gal.	50,000 btu



Venice



Captiva



Lido



Siesta



Soho Cherry - Standard



Rattan Glazed Maple



Ginger Glazed Cherry



Suede Glazed Maple



CHASSIS SPECIFICATIONS

Floor Plan	Engine HP	Axle Ratio	Fuel Cap.	Wheel-base	Front GAWR*	Rear GAWR*	Tag GAWR*	GVWR*	GCWR*	App. UVW	App. NCC
4585	600	4.3	200 gal.	292+TAG	20,000 lb.	20,000 lb.	14,000 lb.	54,000 lb.	69,000 lb.	44,450 lb.	9,550 lb.
4582	600	4.3	200 gal.	292+TAG	20,000 lb.	20,000 lb.	14,000 lb.	54,000 lb.	69,000 lb.	45,150 lb.	8,850 lb.
4581	600	4.3	200 gal.	292+TAG	20,000 lb.	20,000 lb.	14,000 lb.	54,000 lb.	69,000 lb.	45,000 lb.	9,000 lb.
4580	600	4.3	200 gal.	292+TAG	20,000 lb.	20,000 lb.	14,000 lb.	54,000 lb.	69,000 lb.	44,550 lb.	9,450 lb.
4584	600	4.3	200 gal.	292+TAG	20,000 lb.	20,000 lb.	14,000 lb.	54,000 lb.	69,000 lb.	45,050 lb.	8,950 lb.

Lengths, heights, widths and dry weights are approximate. Weight will vary based on optional equipment added to the above base weight.

GAWR: Gross Axle Weight Rating is the maximum permissible weight for an axle.

GVWR: Gross Vehicle Weight Rating is the maximum permissible weight for a fully loaded motor coach.

GCWR: Gross Combination Weight Rating is the value specified by the manufacturer of the vehicle as the maximum allowable loaded weight of this motor coach and any towed trailer or towed vehicle.

UVW: Unloaded Vehicle Weight is the weight of this motorcoach as built at the factory with full fuel, engine oil and coolants. The UVW does not include cargo, fresh water, propane gas or dealer-installed accessories.

NCC: Net Carrying Capacity is the maximum weight of all occupants, including the driver, personal belongings, food, fresh water, waste water, propane gas, tools, tongue weight of towed vehicle, dealer-installed accessories, etc., that can be carried by the motorcoach.

*Specifications supplied by the chassis manufacturer.

ROOF R-VALUE = 16

- a. Fiberglass Roof
- c. Fiberglass Batten Insulation
- d. A/C Ducting
- e. Aluminum Rafter Framing
- f. Kraft Paper Vapor Barrier
- g. 5/8" Bead Foam
- h. 3/16" Panel
- i. Padded Vinyl Overlay

FLOOR R-VALUE = 16

- q. Carpet/Tile
- r. Carpet Padding
- s. 5/8" Floor Decking
- t. Fiberglass Batten Insulation
- u. 2"x 3" Wood Framing
- v. Polyethylene Moisture Barrier

SIDEWALL R-VALUE = 11

- j. 3/16" Plywood Interior Wall
- k. 5/8" Bead Foam
- l. Kraft Paper Vapor Barrier
- m. Fiberglass Batten Insulation
- o. Composite One-Piece Gelcoat Exterior Sidewall
- p. Aluminum Framing with 3 1/2" Header Above

BASEMENT R-VALUE = 4

- y. Cargo Liner
- z. 3/8" Floor Decking
- aa. 3/16" Luan Panel
- bb. 1 1/2" Bead Foam
- cc. Aluminum Sheeting with Steel Support Rails to Prevent Bowing and Flexing

1. 15M Penguin™ Heat Pump Central Air Conditioners (3)
2. One-Piece Bonded Windshield
3. Coated Aluminum Wheels
4. Frameless, Double-Pane, Tinted Safety-Glass Windows
5. Side-Hinged Baggage Doors with Optional Storage Tray

UNRIVALED KING AIRE CONSTRUCTION

The Spartan® K3's strong chassis with 20,000 lb. IFS (Independent Front Suspension), is the highest performing motor coach ever. Its tubular truss web frames and substructure beams form a foundation stable enough to allow extensive pass-through storage. This – and King Aire's GVWR of 54,000 pounds, with a 14,000 pound tag axle, allows King Aire to expand beyond its chassis footprint, creating extra living space. Its Cummins® ISX 600 Hp engine gives you incredible maneuverability and power, even on steep inclines. And if you should ever need it, Spartan's® roadside assistance program is in place for the entire warranty period.

CHASSIS FEATURES

- Spartan® K3 Chassis with IFS
- Cummins® ISX 600 hp
- Allison® 4000 MH Transmission
- Tag Axle
- Automatic Traction Control
- Comfort Drive™ Steering With Power Column and Adjustable Control
- Alcoa Dura-Brite® Aluminum Wheels
- HWH® Four Point Hydraulic Jacks with Single Touch Control and Chassis Air Leveling
- Power Tilt-and-Telescope VIP Smart Wheel with Black Leather
- Memory Settings for Drivers Seat, Pedals, Steering Wheel and Exterior Mirrors
- Cruise Control
- Recessed Fuel Fills with Crossover to Fill from Either Side
- Back-Up Alarm
- Anti-Lock Braking System
- Front and Rear/Tag Disc Brakes
- Electronic Chassis Information Display in Dash
- Tire Pressure Monitor System
- Chassis Service Center
- Leece-Neville 270 Amp Alternator
- 200 Gal. Fuel Tank
- 57 Degree Cramp Angle
- Washer/Dryer Prep
- Sony® 40" LCD TV in Living Area
- Sony® 40" LCD TV in Bedroom
- Trip Tek™ Electronic Travel Information (Displayed on Rearview Monitor)
- Secondary Multiple Touch Screen
- Video Security Cameras with Monitor
- Surround Sound System with CD/DVD/Blu-Ray Player
- Exterior Entertainment Center with 32" Sony® LCD TV and AM/FM Radio with CD Player
- Bose® Wave Radio with CD Player and Alarm Clock in Bedroom
- "Nav-N-Go"™ Navigation System Displayed on Dash Touch Screen Monitor
- High Definition component Wiring and HD-ready Video Switching System
- Xite® AM/FM /Sirius® Satellite Radio-ready with CD and Touch Screen Monitor (Does not include SIRIUS® Monthly Subscription)
- Sony® Blu-Ray CD/DVD Player in Bedroom
- 8.5" X 11" Safe
- Pre-programmed Universal Remote Control
- Central Vacuum with Deluxe Tool Kit
- Soho High Gloss Cherry Hardwood Cabinets with Fully Overlaid Cabinet Doors
- Hidden Leaf-Dinette Table with Corian® Top and Four Chairs (Two Fixed, Two Folding) *
- Polished Corian® Counter top in Kitchen with Under-mounted Stainless Steel Sink and Flush Sink Covers
- Polished Corian® Counter top in Bathroom
- Polished Corian® Counter top on Bedroom Nightstands
- Residential Style Full Extension Ball Bearing Drawer Guides
- Drawers with Dove Tailed Sides
- Villa™ Furniture
- Ultraleather/Vinyl Heated Driver Seat with Eight-Way Power Lumbar and Power Recline

AIR CONDITIONING & HEATING

- Three 15M Penguin™ Heat Pump Central Air Conditioners with Remote Control Thermostat
- Hydronic Zone Heating System
- Roof Air Conditioning Drainage System

APPLIANCES & ACCESSORIES

- GE® 30" Profile Advantium™ Microwave Oven
- Two-Burner Recessed Gas Cook top
- Polished Corian® Range Cover
- Norcold® 12 Cu.Ft. 4-Door Refrigerator with Auto Defrost, Ice maker and Water Dispenser
- Dometic® Freezer on Pullout Tray

ELECTRICAL FEATURES

- 12.5 kW Cummins Onan® Diesel Quiet Generator on Hydraulic Slide and Auto Changeover
- 50 Amp Electrical Service with Flexible Cord on Power Cord Rewind Reel
- Four AGM House Batteries on Pullout Tray
- 5 Watt Solar Panel
- 2800 Watt Pure Sine Wave-Inverter with Automatic Generator Start
- Mid-ship Side Turn Signals
- Recessed Docking Lights
- Switched Receptacle for Engine Block Heater
- Recessed Halogen Lights in Ceiling and Overhead Cabinets
- Lighted Wardrobes with Automatic Switches
- ICC Light Flasher Switch
- Mood Light in Lambrequins, Kitchen Valance and Bed Base
- Daytime Running Lights
- Silverleaf® Multiplex Control System

EXTERIOR FEATURES

- Full-Paint Masterpiece™ Finish with Super Clear Coat & Front Protective Film
- One-Piece Bonded Windshield
- Convex Exterior Chrome Mirrors with Remote Control, Defrost and Turn Signals
- Dual Latch Front Door with Power Flush Step well Cover
- Power Locking Baggage Doors
- 15,000 lb. Towing Hitch with Two Extra 14 Gauge Wires
- Holding Tank Levels Displayed in Exterior Water Works Compartment
- Mud Flaps

INTERIOR FEATURES

- Designer Feature Ceiling
- Power Duo Day/Night Privacy Window Shades (Windshield and Driver/Passenger Side Windows)
- Lined Day/Night Pleated Window Shades and Lambrequins
- Polished Corian® Window Sills
- Porcelain Floor Tile with Metallic Glass Inserts in Kitchen, Bathroom, and Entrance Areas
- Power-Activated Sun Visors

PLUMBING & BATH FEATURES

- Thetford™ Aria Sculptured China Stool (Thetford Vacuum Flush Stool in Rear Baths)
- Corian® Shower Walls with Glass/Metal Tile Inserts and Solid Surface Shower Pan
- Three Monitor Panels (Two in Front and One in Bedroom)
- MANABLOC® Plumbing System
- Monoplex Water-Pump Switches Located in Bathroom, Kitchen and Near Gate Valves
- Auto Water-Fill System
- Whole House Water Filter
- Power Rewind Water-Hose Reel

CONSTRUCTION FEATURES

- Power Lock Arms on All Slideout Rooms

WINDOWS, AWNINGS, & VENTS

- Frameless Double-Pane Tinted Safety-Glass Windows
- Fan-Tastic® Vent with Rain Sensor in Kitchen Area and Bathroom
- Driver's-Side Power Window
- Girard® Power Bedroom and Slideout Window Awnings
- Two Girard® Integrated Power Box Side Awnings with Wind Sensor and Remote
- Girard® Power Front Entrance Door Awning
- Keyless Entry with Door bell and Touch Pad

OPTIONS

AIR CONDITIONING & HEATING

- Electric Heat Under Floor Tile

APPLIANCES & ACCESSORIES

- Maytag® Stackable Washer/220 Volt Dryer in Full Length Cabinet *
- Fisher Paykel® Dishdrawer *
- All-Electric Unit; with Whirlpool® Refrigerator and Four Extra Batteries
- Sony® 40" LCD TV in Front Overhead Cabinet
- Remote-Controlled Rearview Color Camera
- KVH R-6 In-Motion Satellite without Receiver
- Central Vacuum with Deluxe Tool Kit
- CB Radio with Antenna
- Security System
- Extra Monitor for Navigation System on Passenger Side
- Exterior Entertainment Center with 40" Sony® LCD TV

CABINETS & FURNITURE

- Suede Glazed Maple High Gloss Hardwood Cabinets
- Rattan Maple Glazed High Gloss Hardwood Cabinets
- Ginger Glazed Cherry High Gloss Hardwood Cabinets
- Ultraleather Hide-A-Bed with Air Mattress/ Dinette Ensemble with Two Folding Chairs *
- Two Leather/Vinyl Recliners *
- Sleep Number® Air Mattress for Main Bed
- Traditional Interior Styling Package: Cabinet Doors, Passage Doors, Slideout Fascia, Plumbing, Designer Feature Ceiling and Lighting
- Hardware and Sinks

ELECTRICAL FEATURES

- Roof-Mounted Spot Light

EXTERIOR FEATURES

- Large Storage Tray with Access from One Side or Either Side
- Power Sliding Storage Tray

INTERIOR FEATURES

- Power Silhouette Window Shades
- Porcelain Floor Tile Extended into Bedroom

PLUMBING & BATH FEATURES

- Assist Handle in Tub/Shower

*Check with dealership on floor plan availability and complete listing of features.



Mahlon Miller, Newmar founder, and his wife, Irene
Matthew Miller, Newmar president, and his wife, Pam

The quiet, energetic farm town of Nappanee, Indiana is home to Newmar's owners, the Miller family. They are actively engaged in its operations, embracing employees, suppliers, dealers and customers as part of the Newmar family. The family has grown since 1968 but continues to strive for faithfulness to the tenets of its founders, including a strong community, bearing burdens for others, forgiveness, fairness, honesty, integrity, and peace with one's neighbors.



WHEN YOU KNOW THE DIFFERENCE™

NEWMAR CORPORATION
355 N DELAWARE ST
PO BOX 30
NAPPANEE IN 46550-0030
574-773-7791 Fax 574-773-2895

www.newmarcorp.com

THE NEWMAR KOUNTRY KLUB is an exclusive club for owners of fine Newmar products that offers many advantages and benefits to its members. Learn more at: www.newmarkountryklub.com.

ESTABLISHED OVER 40 YEARS AGO, Newmar is an innovator and leader in the RV manufacturing industry. Its quality craftsmanship is recognized nationally. The Newmar dealer network spans across the United States and Canada.

Call 1-800-860-0086 to be our guest for a factory tour.

(Please affix dealer stamp in this area.)

NEWMAR EXPRESS LIMITED WARRANTY

Every King Aire Diesel Pusher is backed by Newmar's one-year limited warranty/unlimited miles. Ask your Newmar dealer for details.

LIMITED FIVE-YEAR STRUCTURAL WARRANTY

If any part of your Newmar recreational vehicle superstructure (which is the steel/aluminum structure of the sidewall, roof or frame) fails to perform properly within five years from the date of purchase because of faulty workmanship or material supplied by Newmar, it will be repaired without charge for either parts or labor by Newmar. This structural warranty is available only to the original purchaser and is non-transferable.

Some features in our literature are optional. Colors and finishes are photographic representations. The actual materials may look different. Prices, specifications and floor-plans are subject to change at Newmar's discretion, without prior notice or obligation. Please see your dealer for actual samples and specifications. ©2011 Newmar Corporation.