



# MARATHON COACH

1142 EXV3SF

VIN # 2PCV3349X7C710999

YEAR: 2008

## Shell Specs

**Converter:** MARATHON COACH

**Shell Type:** PREVOST H3-45 TRIPLE SLIDE FRONT

**Motor:** DETROIT DIESEL SERIES 60

**Transmission:** ALLISON 6 SPEED

**Mileage:** CALL FOR CURRENT MILEAGE

**Jacobs Brake / Retarder:** JACOBS BRAKE

**O. T. R./ Drivers A C:** DRIVERS A/C

**Tires:** MICHELIN

**Exterior Colors:** RED, BLACK, WHITE

## Interior Specs

**Interior Colors:** CREAM & JAVA MOHAGANY

**Floorplan:** CUSTOM

**Bed Arrangement:** CROSS JR KING

**Cabinet Color:** JAVA MAHOAGANY

**Counter Color:** ACORN WITH COFFEE BEAN

**Carpet Color:**

## Equipment Listing

### Interior

LEATHER PILOT AND COPILOT CHAIRS  
 DROP DOWN SALON/COCKPIT TV  
 SOLID WOOD PLANK FLOORING  
 ONE LEATHER RECLINER  
 FABRIC SLEEPER SOFA  
 ADDITIONAL SALON SLIDE OUT TV  
 FACING EXPANDABLE BOOTH DINETTE  
 ELECTRIC COOK TOP  
 MICROWAVE/CONVECTION OVEN  
 SIDE BY SIDE REFRIGERATOR/FREEZER  
 DISHWASHER DISHDRAWER  
 MID COACH FULL BATHROOM  
 MASTER SUITE WITH TV  
 AUTOMATIC WINDOW BLINDS  
 WALK IN REAR CLOSET  
 STEREO AND SURROUND SOUND SYSTEM  
 MIRROR CEILING INSERTS  
 TECHLINK ELECTRICAL CONTROLS  
 CRESTRON AUDIO/VIDEO CONTROLS

### Exterior

THREE SLIDE OUTS, TWO IN FRONT  
 FOUR ROOF AIR CONDITIONERS  
 CUSTOM PAINT SCHEME  
 RAMCO SIDE VIEW MIRRORS  
 SIDE AND REAR VIEW CAMERAS  
 TOW PACKAGE  
 SATELLITE SYSTEMS

### Underbelly

20 KW GENERATOR  
 FREEDOM PLUS SEWER SYSTEM  
 ENTERTAINMENT BAY WITH TV  
 AIR COMPRESSOR  
 ELECTRIC BAY DOOR LOCKS  
 PLUMBING BAY WITH WASH STATION  
 CARPETED AND INSULATED STORAGE

## Tank Capacities

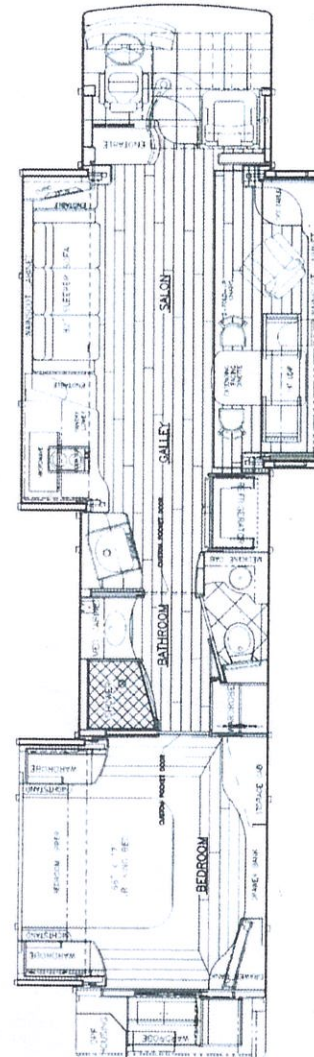
**FUEL CAPACITY** 235 GALLONS

**FRESH TANK CAPACITY** 165 GALLONS

**GREY TANK CAPACITY** 93 GALLONS

**LP GAS CAPACITY**

**BLACK TANK CAPACITY** 72 GALLONS



All Prices And Options Are Subject To Change Without Notice.  
 Although We Try To Provide Accurate Information, It Is Not Guaranteed. Equipment Important To The Customer Should Be Personally Verified.